



Customer Information Guide

CO₂ Tank Tips

For our Platinum Service and Telemetry Customers

Your tank comes equipped with a telemetry system which monitors CO₂ use for uninterrupted carbonation supply. This system alerts Airgas of any problems so that corrections can be made immediately.

For our Customers without Telemetry

- A daily inventory check of your bulk CO₂ tank allows time to report low product levels prior to peak business days.
- Bulk CO₂ tanks have easy to read gauges. Report inventories below 25% (1/4 tank).

Normal Tank Operations:

- Normal tank operating pressure is between 90-110 PSI on the Supply Gauge, and 120-280 PSI on the Vessel Gauge.
- It is normal for frost to form on the fill line and the vent line when the unit is being filled.
- The Vessel Gauge may read as high as 300 PSI and your tank may begin to vent. Venting should cease within an hour.
- Ice or frost in the form of rings is normal during periods of high CO₂ draw (for example, lunch rush and dinner rush).
- Call Airgas if the supply pressure falls under 90 PSI



SUPPLY GAUGE



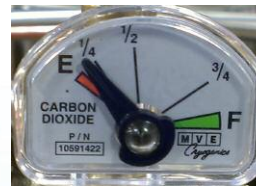
VESSEL GAUGE

Troubleshooting

- Ice build-up on the top of the tank suggests there is a potential leak on the bulk system.
- Ice build-up on the supply regulator and supply hose or side of the tank is an indication of a down stream leak in the beverage system.
- If you think a leak is present, call Airgas immediately. Your safety is our primary concern and you will need to:
 - Make sure the room is ventilated.
 - Check all bag-in-a-box attachments

When should I call Airgas?

1. For customer with telemetry, Airgas will maintain product levels seamlessly so you don't have to worry about contents.
2. For customers without telemetry, call us if your contents gauge is below 25% or 1/4 full.
3. If your supply pressure gauge falls below 90 PSI or vessel gauge drops below 120 PSI.



CONTENT GAUGE PHOTOS



4. If you think a leak is present call Airgas.

Toll Free 1-800-772-8144

- If you are experiencing problems that are unrelated to these issues, call your beverage provider for assistance. If you contact Airgas for an unrelated problem, you may be charged a special assistance fee.

Airgas

National Carbonation™

Carbon Dioxide Refrigerated Liquid

Always Keep Container in Upright Position

Health Hazards

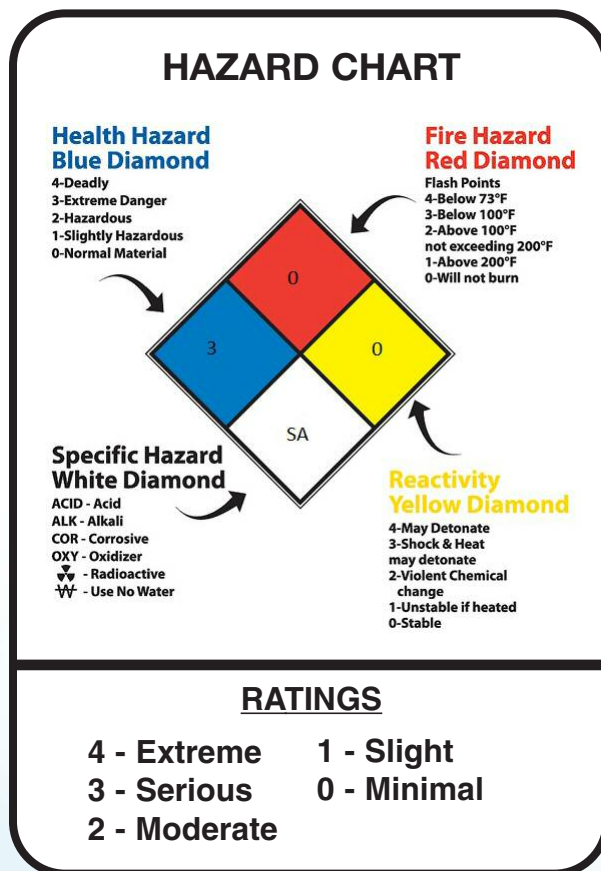
- Cold liquid and gas under pressure
- Can cause rapid suffocation
- Can increase respiration and heart rate
- Can cause respiratory tract, eye and skin irritation
- May cause frostbite

Use Caution

- Avoid breathing gas
- Store and use with adequate ventilation
- Do not get liquid in eyes, skin or clothing

Organ Hazards

- Lungs
- Cardiovascular system
- Skin, eyes and CNS
- If inhaled, move to fresh air
- If not breathing, give artificial respiration
- If breathing is difficult, give oxygen
- Call a physician or 911
- In case of frostbite, obtain medical treatment immediately



Toll-Free
1-800-772-8144

www.airgasnationalcarbonation.com